

*Shaping  
Future of  
Façades*



**LIOLI**<sup>®</sup>  
Porcelain by Caesarstone Ltd.

Lioli Ceramica Pvt. Ltd.

NH 8/A, Bharat Nagar, Village Morbi, Gujarat - 363642, INDIA  
+91 95123 00680 | [info@lioliceramica.com](mailto:info@lioliceramica.com)  
[www.lioliceramica.com](http://www.lioliceramica.com)

1200x3000x5mm

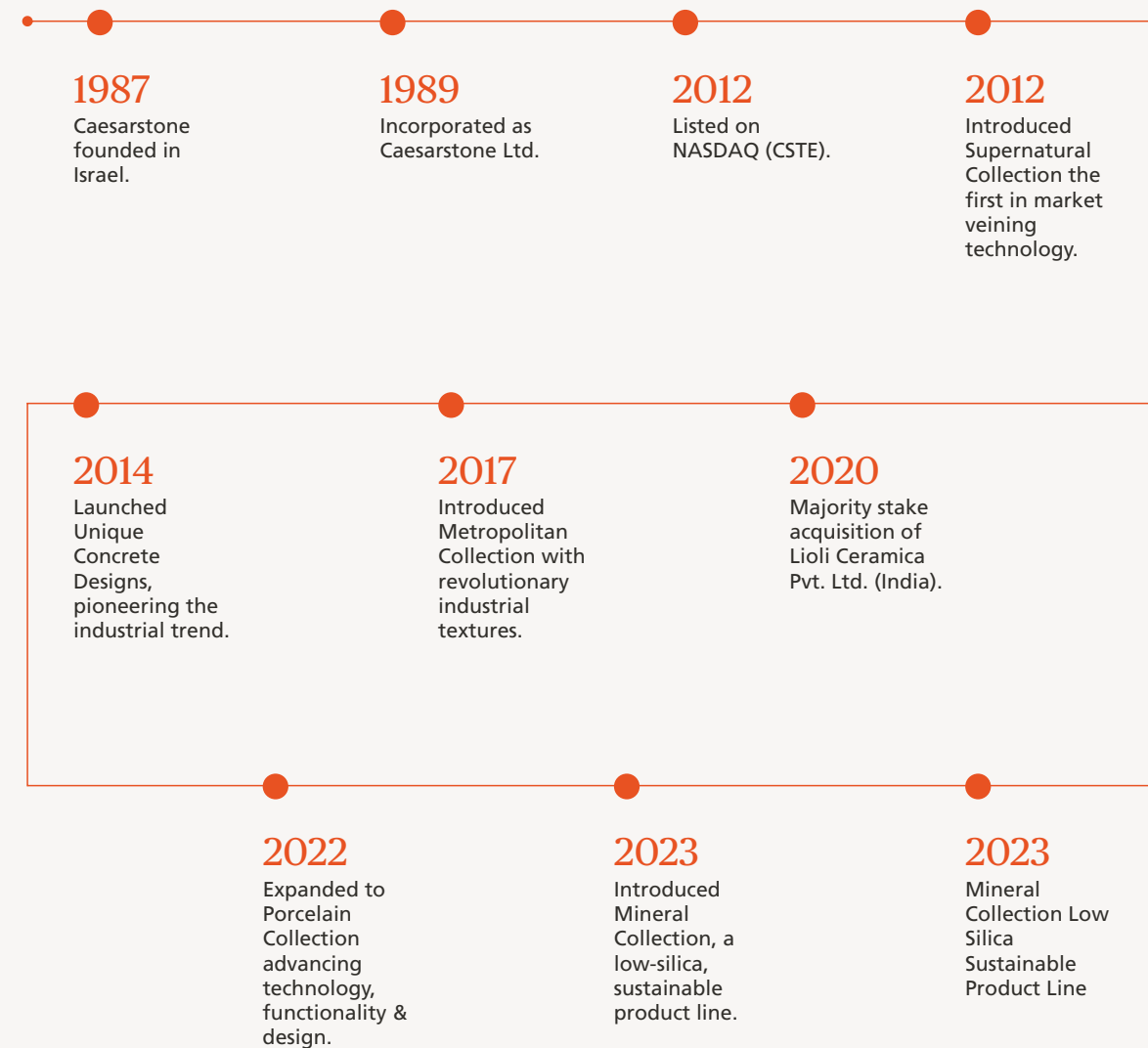
**LIOLI**<sup>®</sup>  
Porcelain by Caesarstone Ltd.

# Since 1987 Pioneer of Mineral Surfaces

Caesarstone Ltd. is a global leader in engineered surfaces, celebrated for pioneering quartz and mineral designs that elevate interiors worldwide. With a presence in over **50 countries** and millions of installations, Caesarstone continues to set international standards in craftsmanship, technology, and sustainability. Publicly traded on **NASDAQ (CSTE)**, the brand is distinguished by its unwavering commitment to quality, innovation, and safety.



#1 global safety program for fabricators.



## *Journey of Innovation*



# We *Care* About The Planet. Just Like You.



Up to 40% recycled materials in our Mineral surfaces



No more than 40% crystalline silica in our entire portfolio by 2026



100% renewable electricity by 2026



100% renewable electricity by 2026



100% recycled water, zero discharge



Zero landfill waste by 2030

For us, sustainability is more than a goal. It's a principle.

Aligned with the essence of our time, we hold a steadfast commitment to our planet's well-being. From the selection of materials to manufacturing and end use, we take responsibility for promoting practices that lead to change in our market towards a greener future. It's a core commitment that extends throughout our entire network of valued business partners.

**+50**  
**Countries**

Global leaders in  
Engineered Surfaces



From bustling cities to serene countrysides, Caesarstone has earned the trust of homeowners, architects, and designers in over 50 countries across the globe. Our surfaces adorn millions of homes, redefining beauty and functionality through timeless design and exceptional

craftsmanship. Driven by a global vision and powered by industry-leading technology, we continue to shape inspiring spaces that transcend boundaries — bringing elegance, quality, and innovation to every corner of the world.

# *A Global* Collaboration

In 2020, Caesarstone strengthened its global footprint by acquiring a majority stake in Lioli Ceramica Pvt. Ltd., one of India's most advanced porcelain slab manufacturers. This strategic merger united Caesarstone's global design leadership with Lioli's manufacturing excellence, enabling the creation of Asia's largest porcelain slabs (1600x3200mm). Together, they blend international innovation with Indian craftsmanship to redefine architectural surfaces for both interiors and façades.

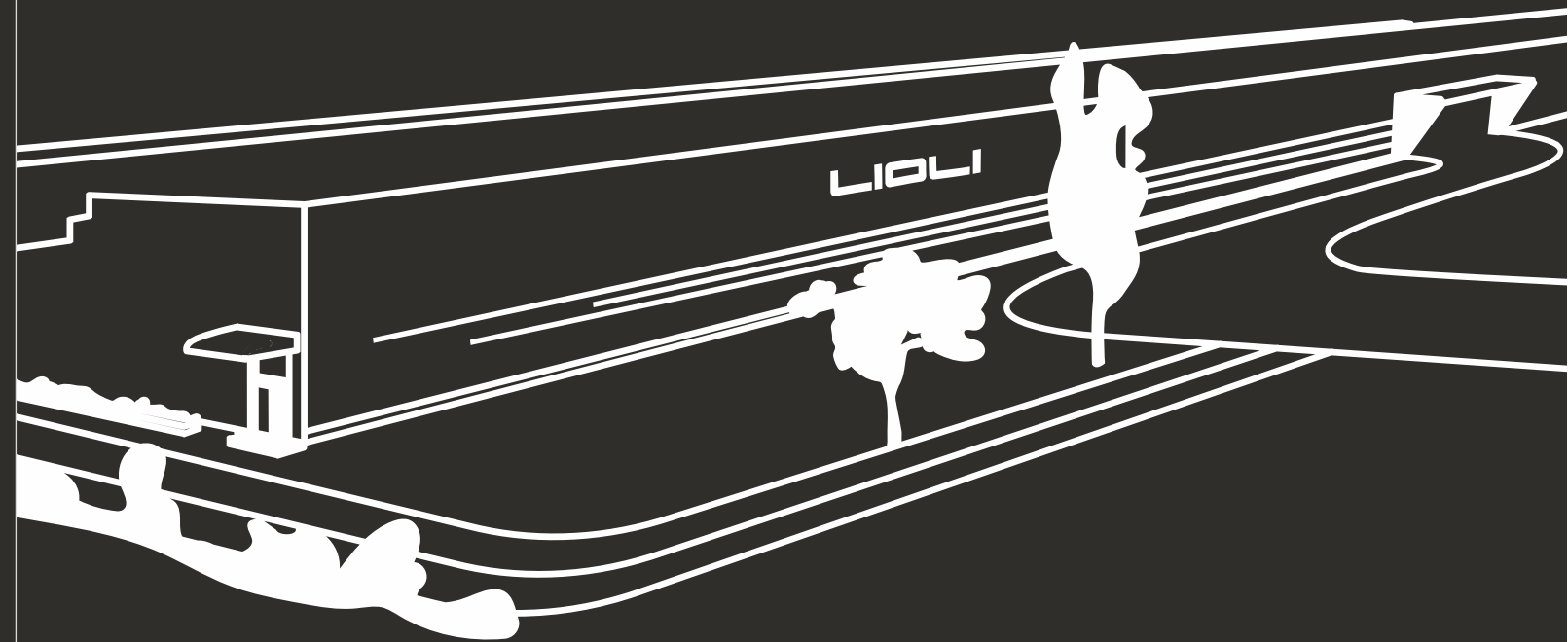
**30**  
Acres of Land

**02**  
Slabs Per Minute

**1600x3200mm**  
Pioneer in Asia

**100,000**  
Square Meters  
Roofed Space

**10,000**  
Square Meters Per Day  
Of Production Capacity



# Industry Leading *Technology*

At Ioli, quality is more than a promise - it's our foundation. Every surface we craft reflects precision, consistency, and excellence made possible by the world's most advanced manufacturing systems.

**SYSTEM GROUP**  
Mouldless Press



**MODENA**  
Kiln

Powder Silo



**SACMI**  
Spray Dryer

To ensure the highest standards, our production facility is equipped with state-of-the-art Italian machinery, integrating innovation and efficiency at every stage - from raw material preparation to the final finish.

BMR  
Polishing Line

# Global Benchmark in *Technology*



# *Façade* Collection



### Architecture is more than structures.

It is about how a building breathes, how it speaks and how it endures.

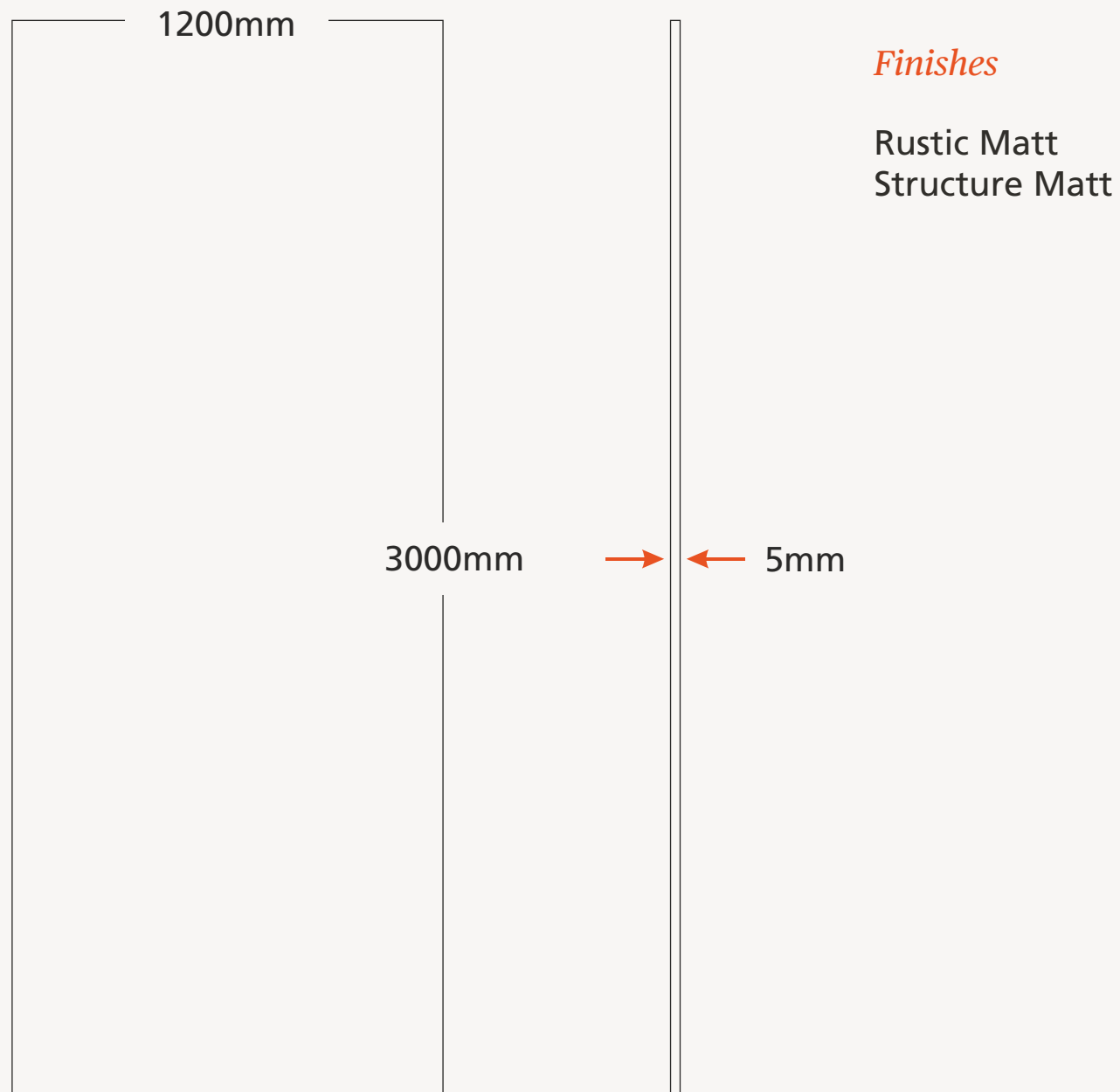
The façade is the skin of architecture - the defining element that transforms walls into expressions and silhouettes into landmarks.

The Lioli Façade Collection is created for visionaries who shape skylines and craft experiences. Each porcelain slab is a fusion of art and engineering resilient against time, weather, and fire, yet graceful in its textures and tones.

From minimal modernism to timeless, stone-inspired designs, these surfaces empower architects to sculpt bold identities while ensuring performance that lasts for generations.

Because a façade is not just decoration - it is the true face of architecture.

# Engineered for Everyday *Excellence*



# Engineered to Endure



High Heat and  
Frost Resistance



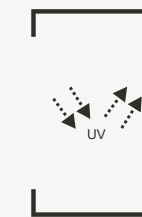
Ease of  
Cleaning



High Stain  
Resistance



High Abrasion  
Resistance



High UV & Weather  
Resistance



Low Water  
Absorption  
(Near Zero)



Everlasting



Hygienic



High Scratch  
Resistance



Cutting



Drilling



Environmentally  
Friendly



Non Flammable  
(Flame Resistant)



Chemical  
Resistance



Anti-graffiti



*Ferro Corten*

1200x3000x5mm

Rustic Matt



*Gravel Steel*

1200x3000x5mm

Structured Matt



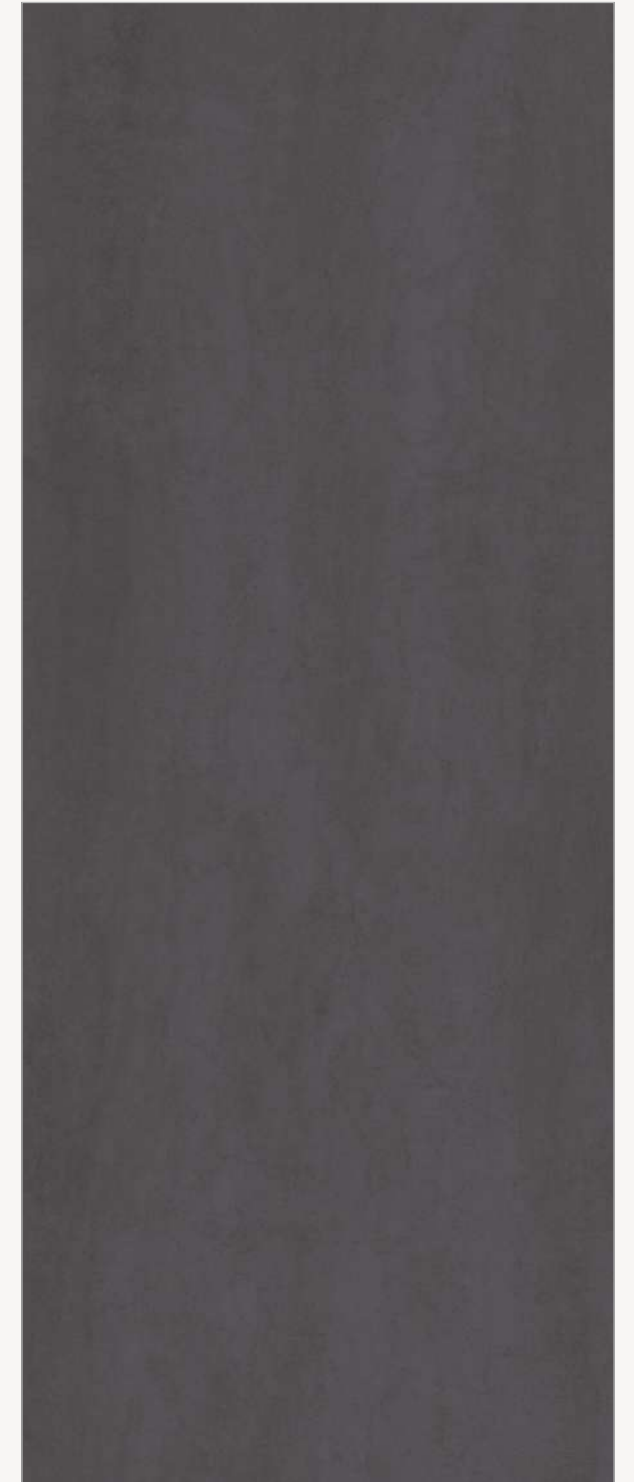
Ferro Corten



*Fossil Cream*

1200x3000x5mm

Rustic Matt



*Gravel Anthracite*

1200x3000x5mm

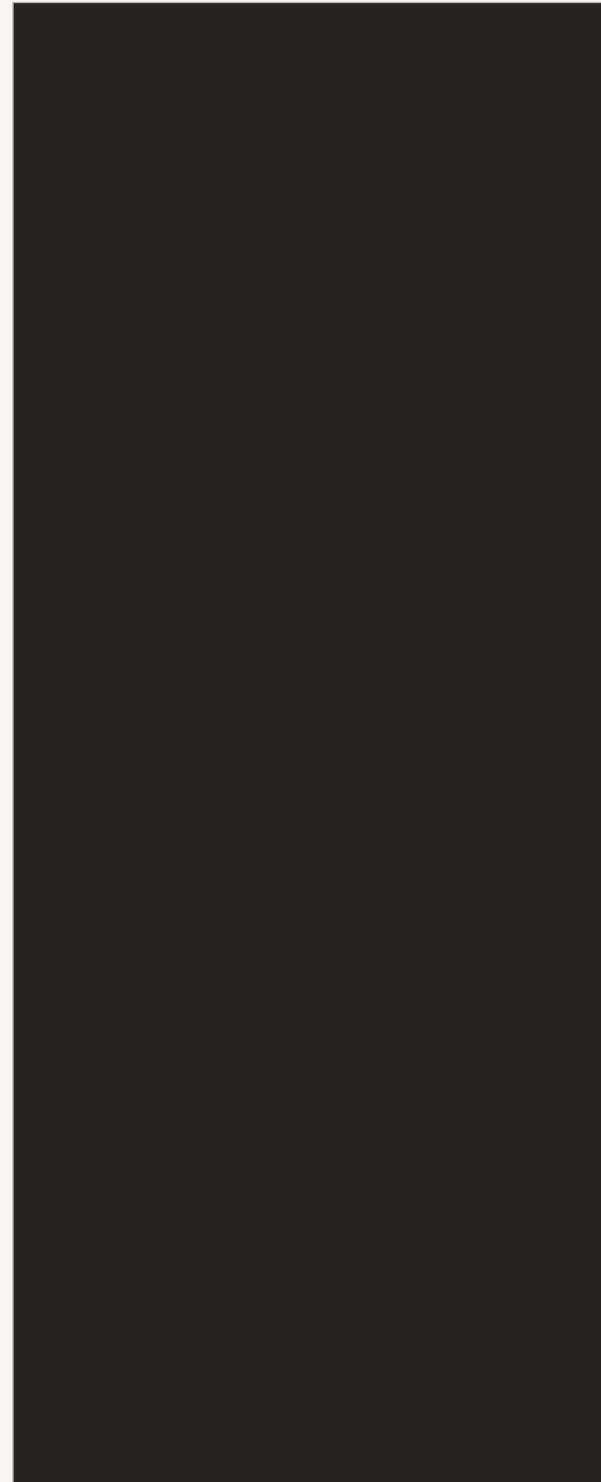
Structured Matt



*Solid Bianco*

1200x3000x5mm

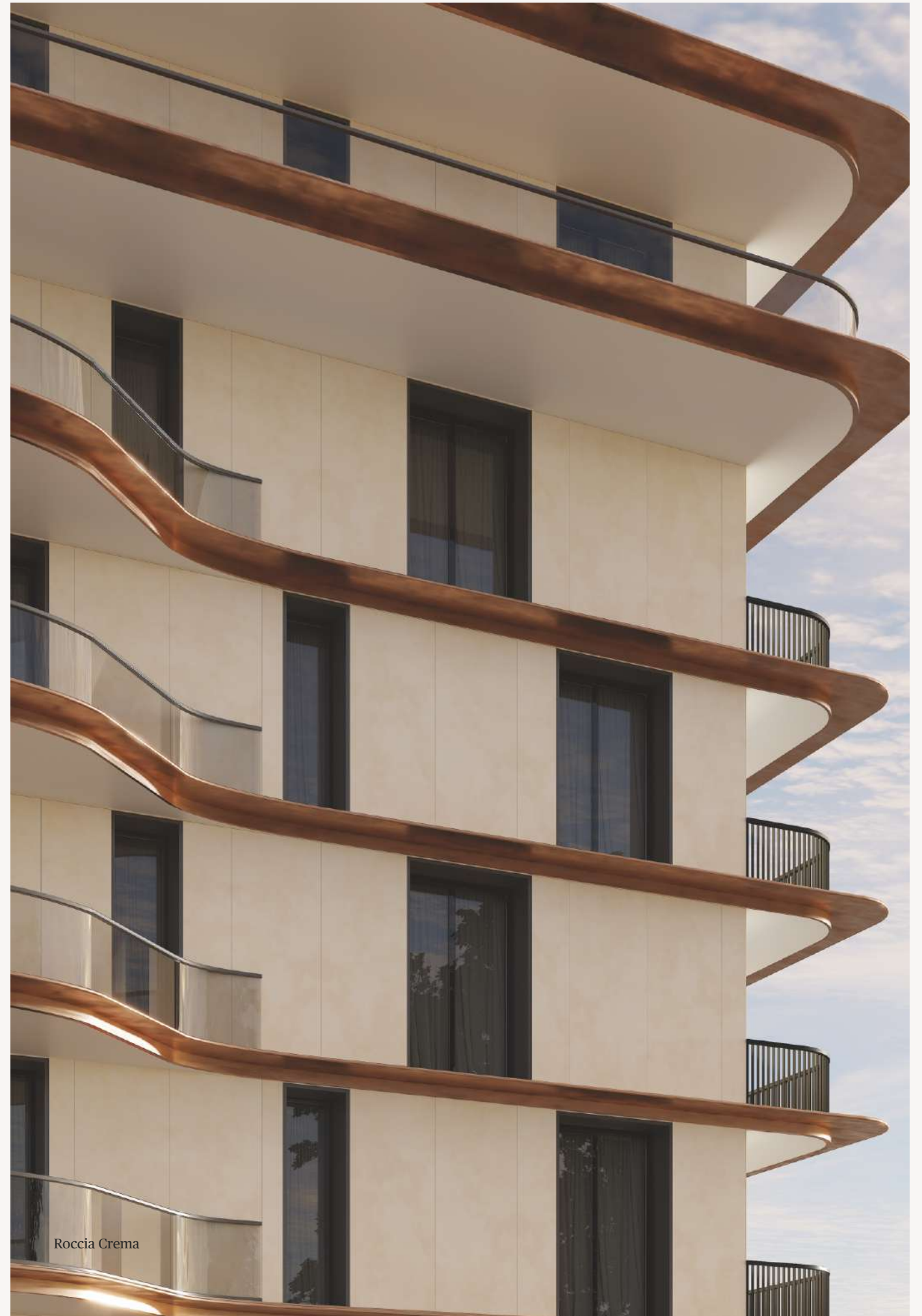
Rustic Matt



*Solid Noir*

1200x3000x5mm

Rustic Matt



Roccia Crema



Marble Statuario



*Gravel Perla*

1200x3000x5mm

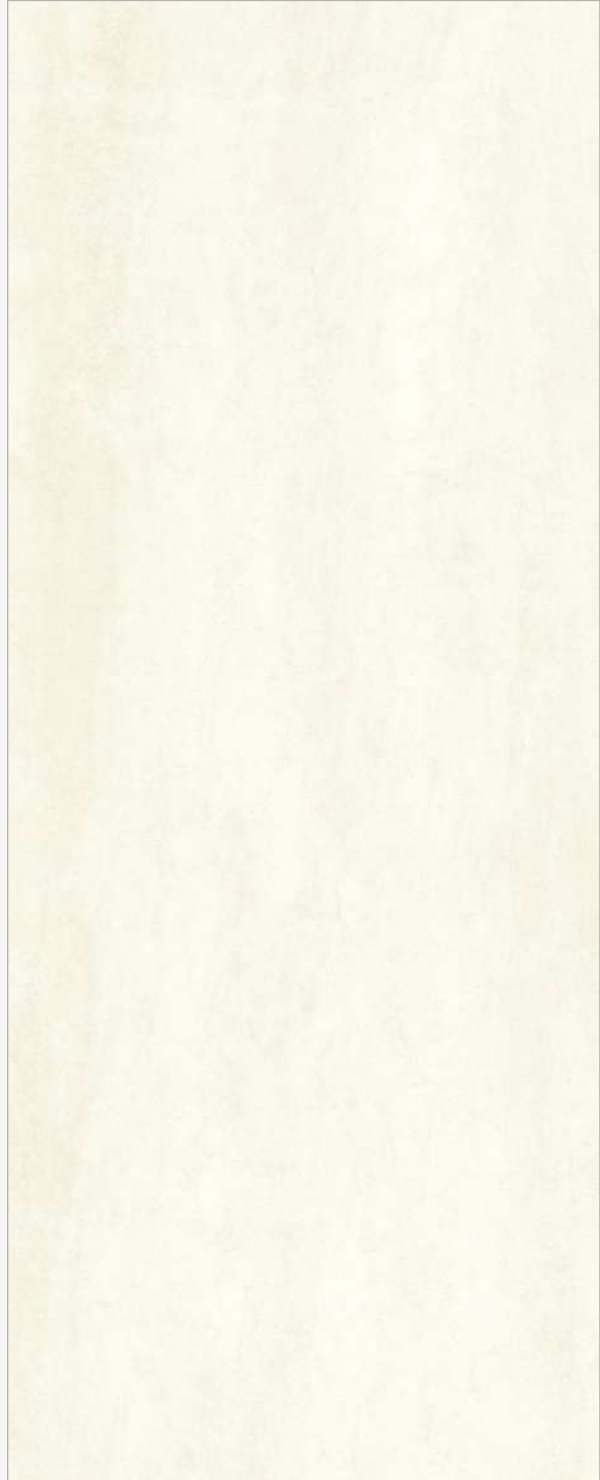
Structured Matt



*Marble Statuario*

1200x3000x5mm

Rustic Matt



*Gravel Crema*

1200x3000x5mm

Structured Matt



*Gravel Grigia*

1200x3000x5mm

Structured Matt



Gravel Crema



*Marble Travertino*

1200x3000x5mm

Rustic Matt





Pietra Limestone



*Pietra Limestone*

1200x3000x5mm

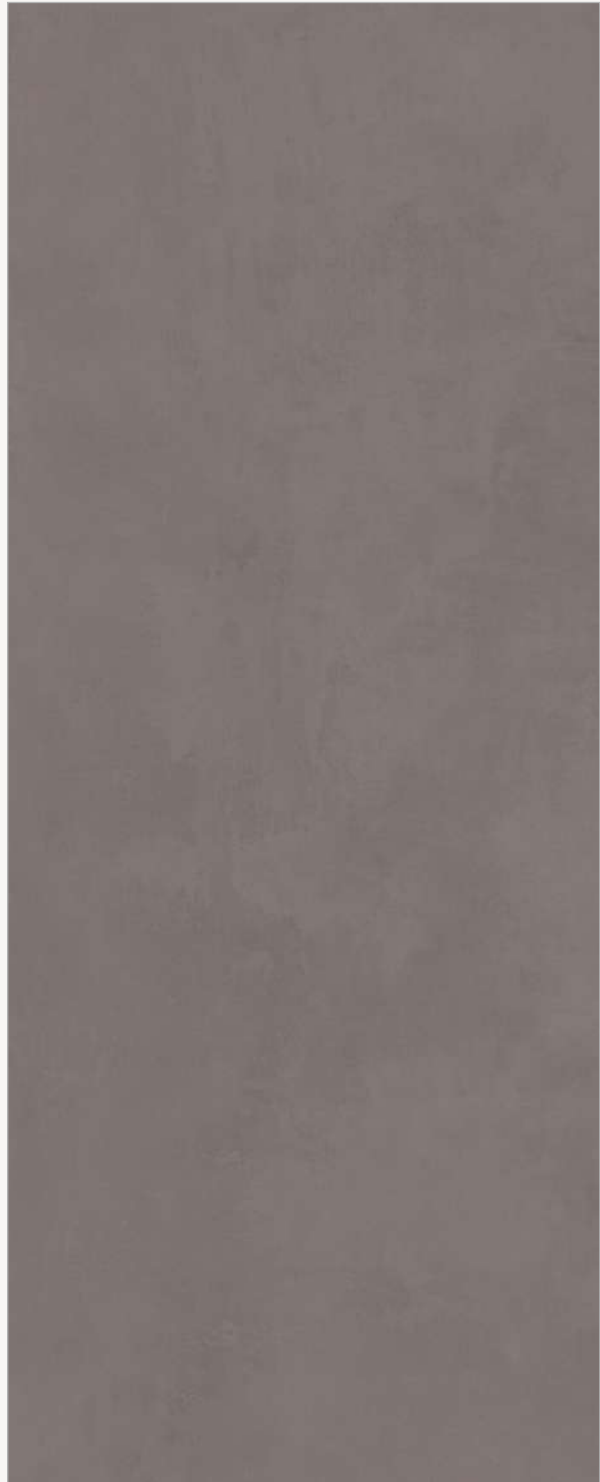
Rustic Matt



*Roccia Anthracite*

1200x3000x5mm

Rustic Matt



*Roccia Brown*

1200x3000x5mm

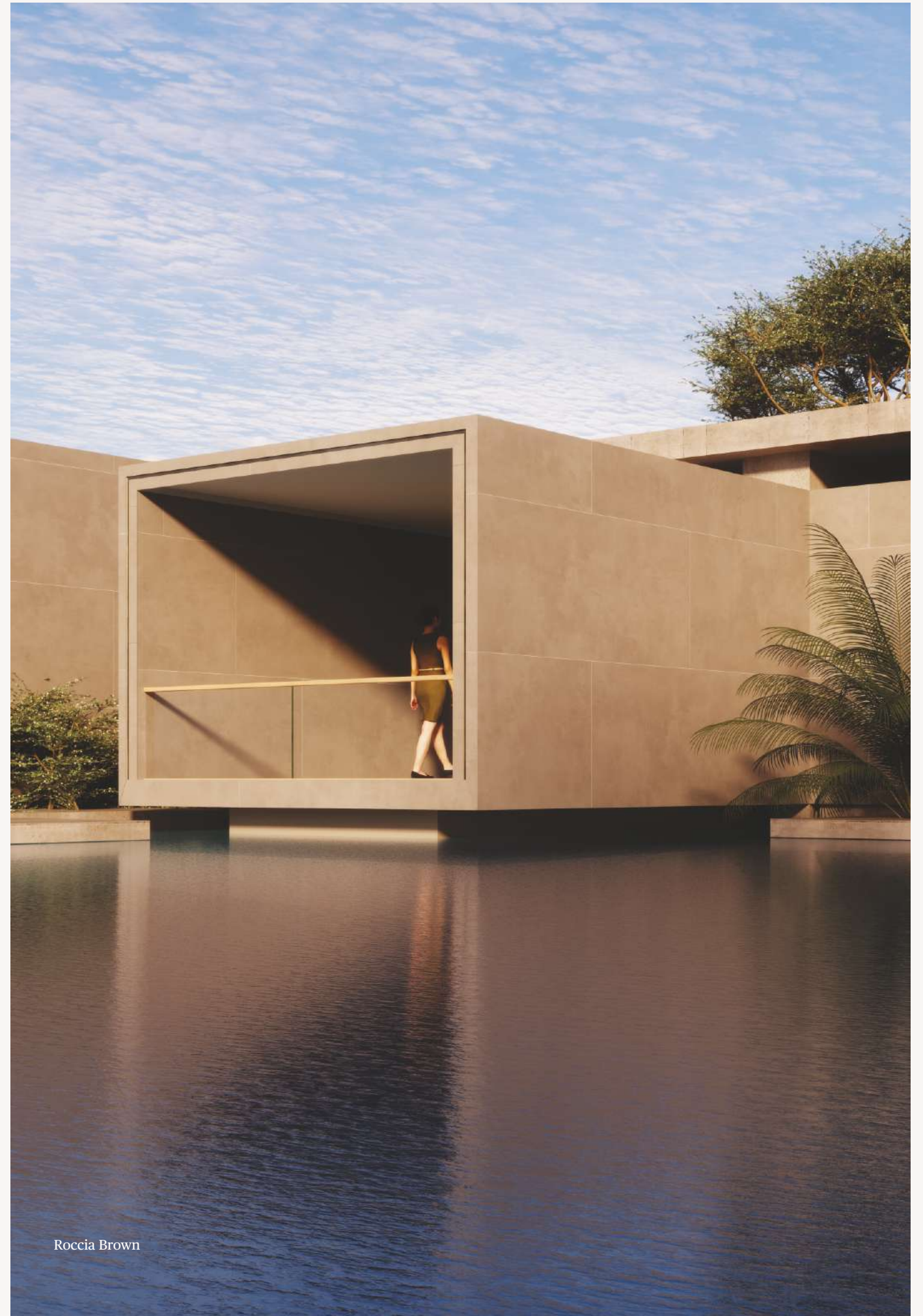
Rustic Matt



*Roccia Crema*

1200x3000x5mm

Rustic Matt



Roccia Brown



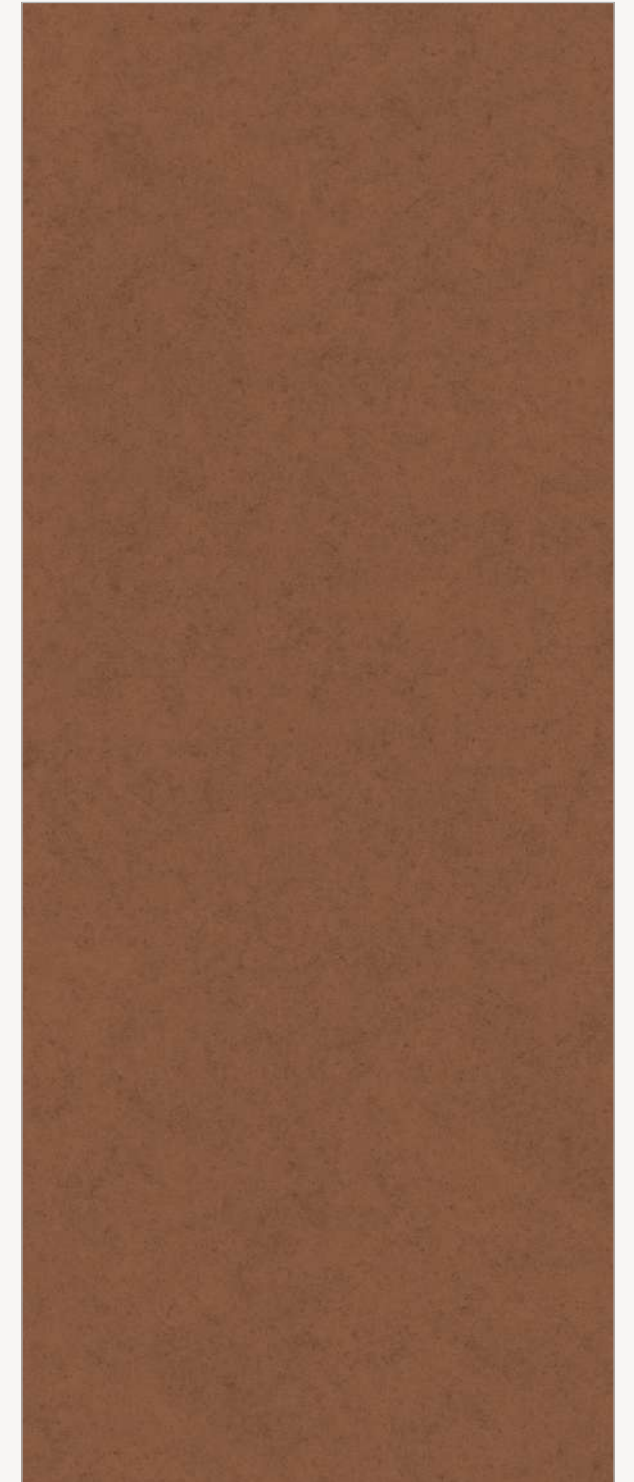
Terracotta



*Roccia Gris*

1200x3000x5mm

Rustic Matt



*Terracotta*

1200x3000x5mm

Structured Matt



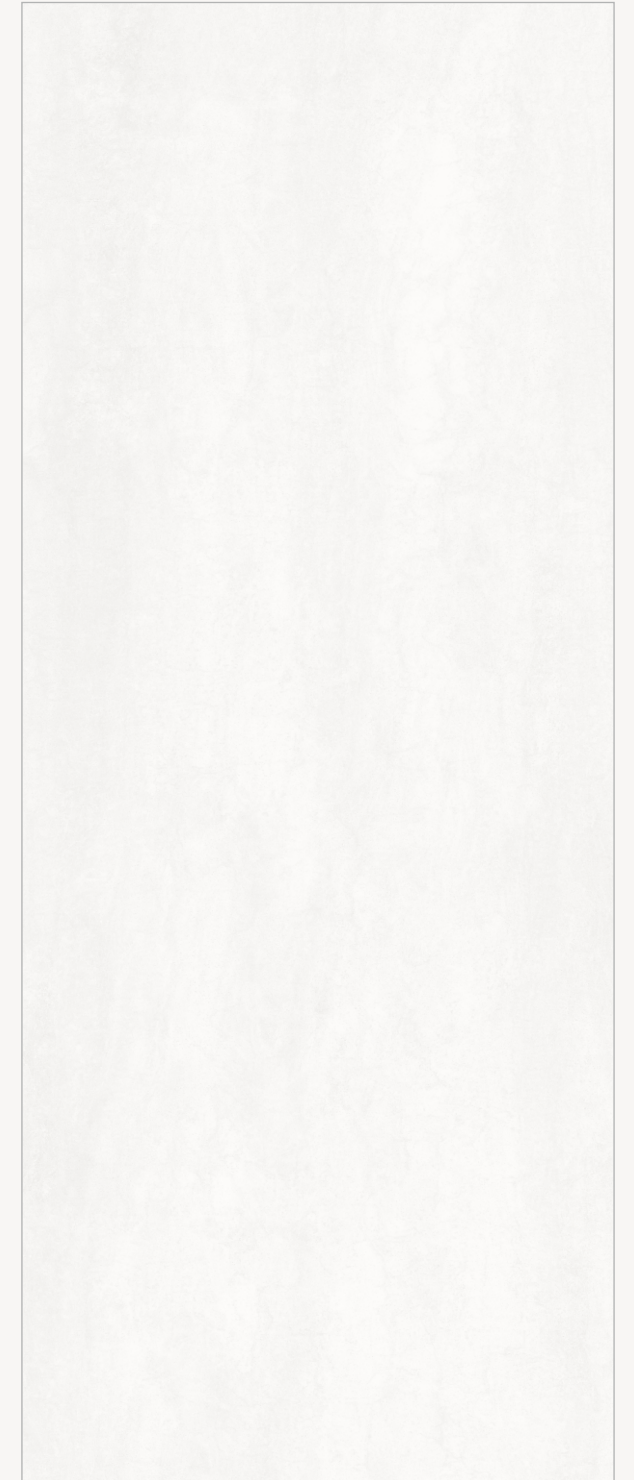
Roccia Gris



*Gravel Graphite*

1200x3000x5mm

Structured Matt



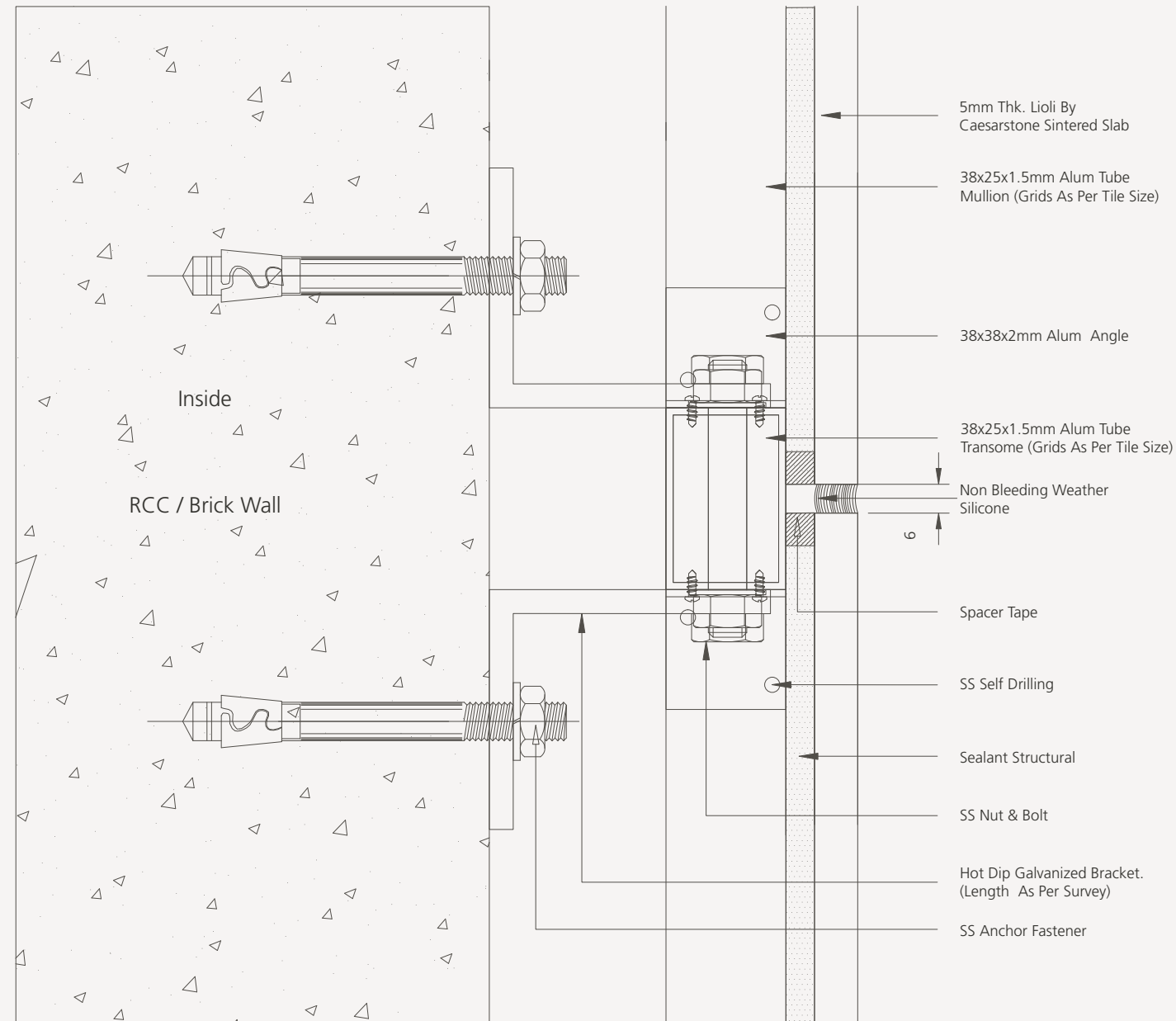
*Gravel Ice*

1200x3000x5mm

Structured Matt

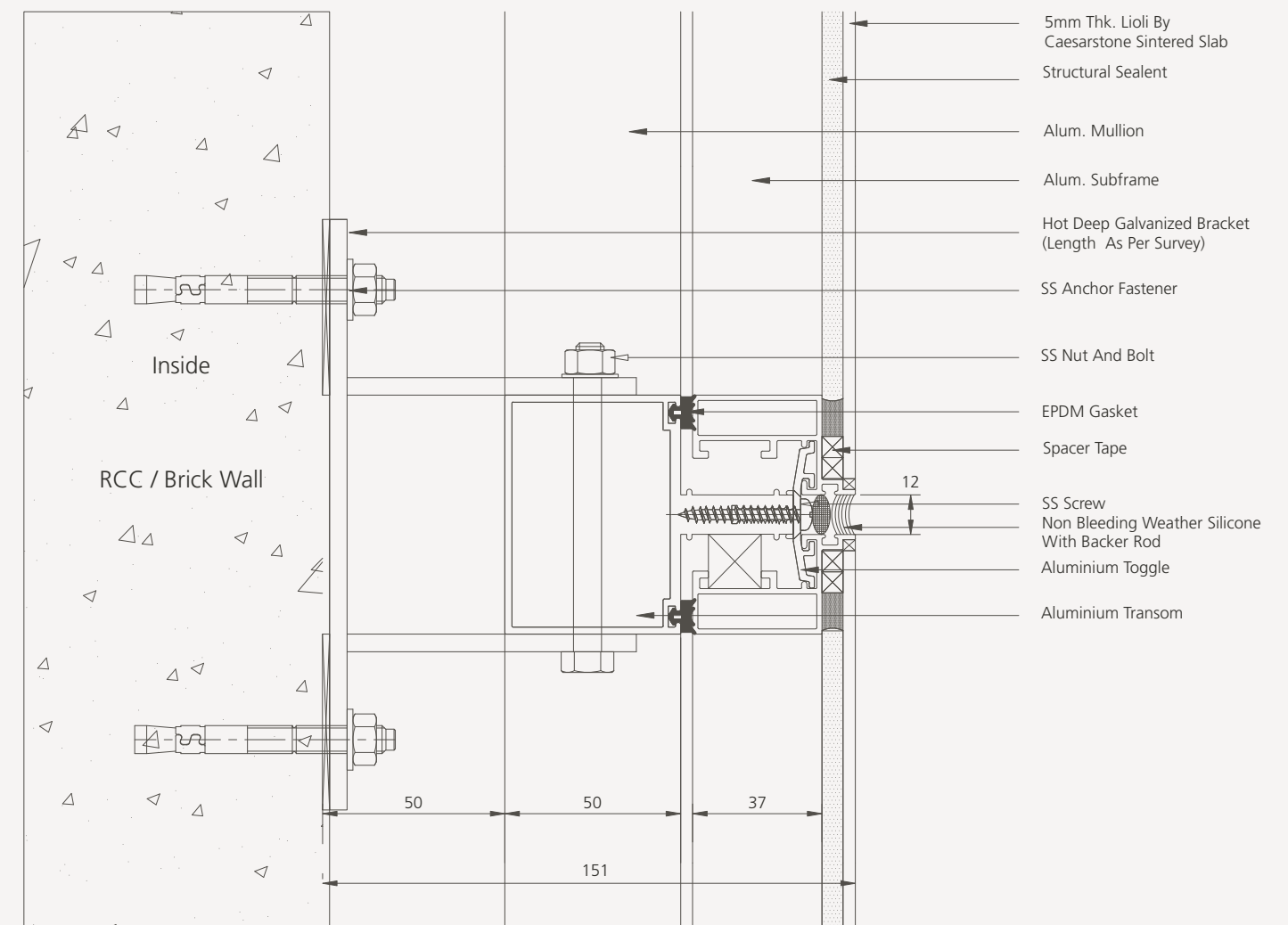
# Facade System 1 Stick System

Outside



# Facade System 2 Semi Unitized System

Outside



# Technical Specification

Dimension & Surface Quality	Standard as Per ISO 13006 EN14411 Gr.Bla	Method of Testing	Test Result
Deviation In Length and Width	±0.5 %	ISO 10545-2	±0.06 %
Deviation in thickness	±0.5 %	ISO 10545-2	±3.5 %
Straightness in side	±0.5 %	ISO 10545-2	±0.06 %
Rectangularity	±0.5 %	ISO 10545-2	±0.06 %
Surface flatness	±0.5 %	ISO 10545-2	±0.08 %
Color difference	Unaltered	ISO 10545-2	No change
<b>Structural Properties</b>			
Water absorption	≤0.5 %	ISO 10545-3	≤0.1 %
Apparent density	> 2.0 g/cc	DIN 51082	> 2.312 g/cc
<b>Surface Mechanical Properties</b>			
Surface abrasion	As per mfg.	ISO 10545-7	Class-5
MOH'S hardness	As per mfg.	EN 101	>7
<b>Thermo Hygrometric Properties</b>			
Frost resistance	No damage	ISO 10545-12	No damage
Thermal shock resistance	No damage	ISO 10545-9	No damage
Moisture expansion	Nil	ISO 10545-10	Nil

Linear Thermal expansion(COE)	Max. 9.0 x 10 <sup>-6</sup>	ISO 10545-8	3.2x 10 <sup>6</sup>
Crazing resistance	As per mfg.	ISO 10545-11	> 10 cycle
<b>Chemical Properties</b>			
Chemical resistance	No damage	ISO 10545-13	GA
Cleaning products			
Pool salts			
Weak concentration			
High concentration			
Release of lead and cadmium	As per mfg.	ISO-10545-15	No release
Stain resistance	Resistant	ISO 10545-14	Class-4
<b>Safety Properties</b>			
Fire resistance	As per mfg.	EN 13501	Class A2,s1,d0
Slip resistance	> 0.40	ISO-10545-17	>0.43
<b>Massive Mechanical Property</b>			
Breaking strength (N)	>700	ISO-10545-4	1240
Modulus of Rupture (N/mm <sup>2</sup> )	>40	ISO-10545-4	77
Coefficient of Restitution	>0.6	ISO-10545-4	0.86